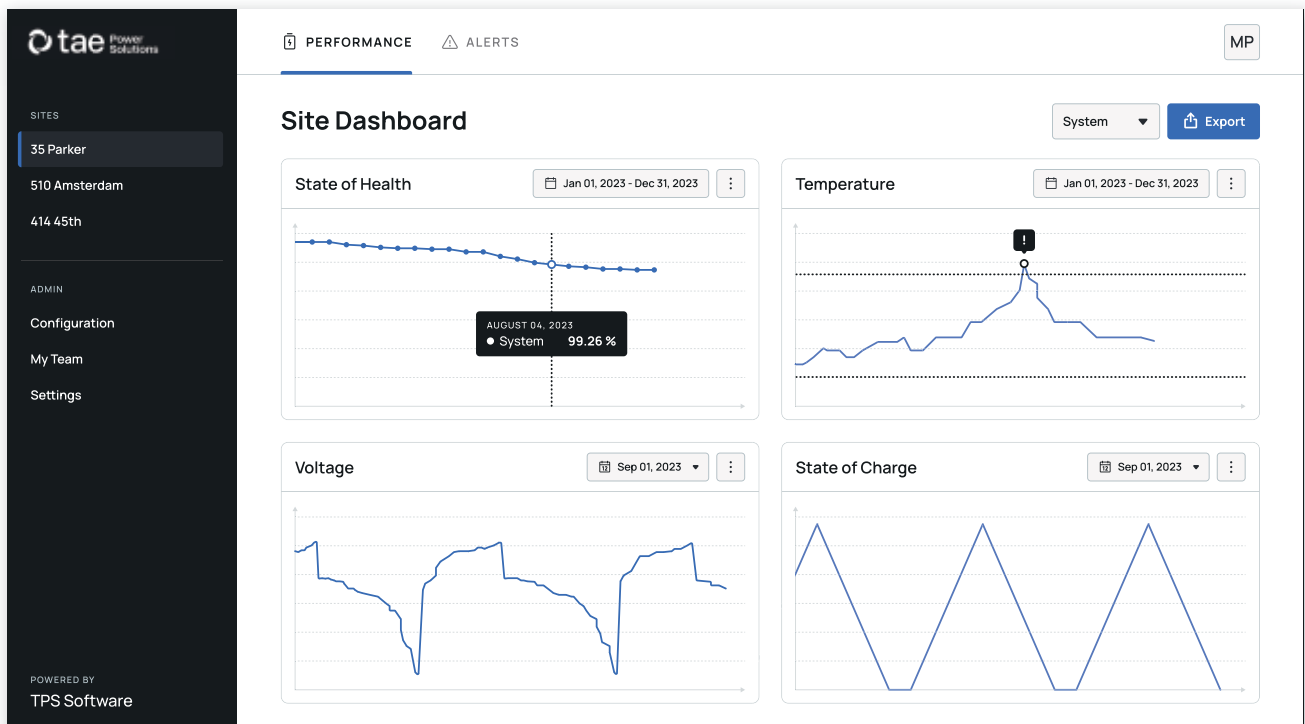


A flexible software system designed to optimize your BESS assets by providing cutting-edge monitoring and alerting to protect your investment and increase ROI.

- Performance Monitoring from system to cell level:
- Cell level battery insights
- Anomaly detection,
- Advanced SOH monitoring
- System performance reporting including SOC, Time of use, Run Rate, Availability
- Customizable Alerts
- APIs for integration with existing EMS & SCADA systems
- Warranty and history reporting providing live asset valuation
- Remote Configuration and Control



The TPS Bridge enables seamless data transmission with top-of-the-line cyber-security to enable fine grained battery insights so you can unlock the full value of your BESS asset.

PARAMETERS	SPECIFICATIONS
Dimensions	100 mm x 125 mm x 90 mm
	(without mating connectors)
Power Supply	24 V
Mechanical Mounting	DIN Rail & Flat mount
Internal Communication	CAN/CAN FD
	MODBUS TCP/IP
	RS-232 / 485
External Communication Protocols	WiFi
	Ethernet
	MODBUS TCP/IP
	Optional integration of LTE 4G
Memory Capacity	4 GB RAM
	128 GB eMMC flash
Buffering	24hr full fidelity data storage
Certification	UL/IEC 61010
	FCC 47 CFR Section 2.907
	Designed to: UL 121201 Class 1
Cyber Security	ANSI/CAN/UL 2900 and IEC 62351
	SEI CERT C/C+ and IEC 62351
Environmental	Temperature : -20° to 50° C
	Operating humidity : 10-95%

